

◎ Reel storage



W1200×D760×H1040
25reel (φ600 or φ400)
Humidity 5% RH or less, static electricity prevention, load resistance 500kg

◎ Separate type



W650×D700×H1200
For research laboratory
Upper 3% RH or lower, Lower 10~30% RH

◎ Load capacity1000kg type



W1200×D710×H1210
For die and mold storage
Load capacity Each shelf 250 kg
Ultra low humidity type

◎ Stored item display storage



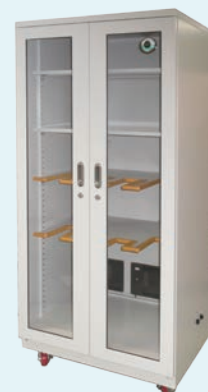
W816×D538×H1743
For display
Constant humidity 50% -70% RH,
LED lighting inside

◎ Stored item display storage



W1220×D538×H1750
For display
Constant humidity 50% RH,
LED lighting inside

◎ Sword and art storage



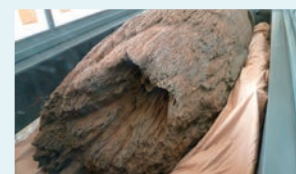
W800×D730×H1680
Sword storage
Humidity 30% RH retention

◎ Long-term storage electromagnetic wave protection products



W1500×D650×H1800
For HDVD long-term storage
Load bearing type
Paint to prevent electromagnetic waves

◎ Cultural property storage (Pillar of the Yayoi)



This pillar is one of the pillars used in the largest building of the time when it was built in the middle of the Yayoi period.

W2800×D1100×H1350 Capacity: 5300 ℓ
Humidification: variable type
Dehumidification: Humidity 50 ~ 60% RH Control type

Please feel free to contact us

DRY-CABI. WET-CABI.